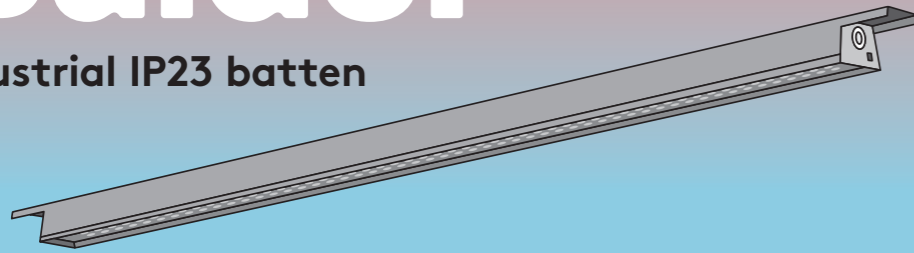


Balder

Industrial IP23 batten



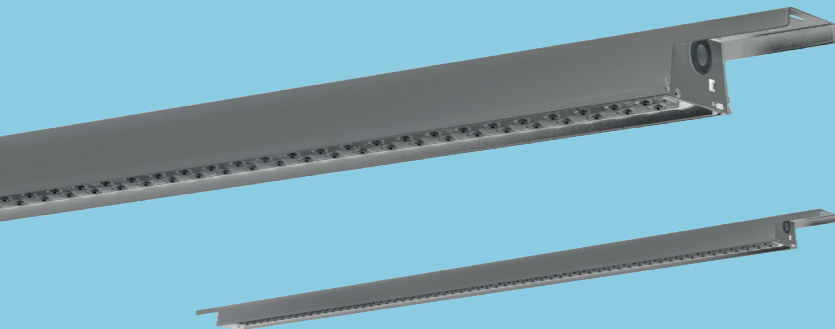
Ideal for: Warehouses, distribution centres, storages, production plants and commercial



Perfect for retrofit and new installations, Balder has a classic IP23 design with a focus on quick and easy installation.

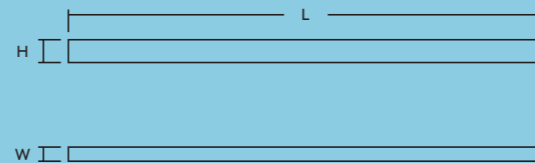


- Two different lens options for deep beam or batwing distribution
- Always through-wired 5 pole terminal block
- Suitable for surface mounting or catenary suspension (build-in option - no loose parts)
- Quick and easy installation via maintained gear tray
- 1745 mm length makes it perfect for retrofit
- High efficacy: 9000lm model delivers 170lm/W, and the 12000lm model delivers 160lm/W



	L	W	H
BALDER 9000	1745	52	84
BALDER 12000	1745	52	84

Dimensions (mm)



Specification

Electrical class	I
------------------	---

Installation / Mounting

Mounting	Suitable for surface mounting or catenary suspension
----------	--

Material / Finish

Body	Galvanized sheet steel
------	------------------------

Light source information

Colour temperature	4000 K
Lumen	12000lm (75W), 9000lm (52W)
Efficiency	up to 170lm/W
Lifetime	100000 hours (@L70, Ta 25°C)
MacAdam (Initial)	3

Ordering guide

Description	SAP Code
BALDER 1745 IP23 12000 840 MB	96634219
BALDER 1745 IP23 9000 840 WB	96634221