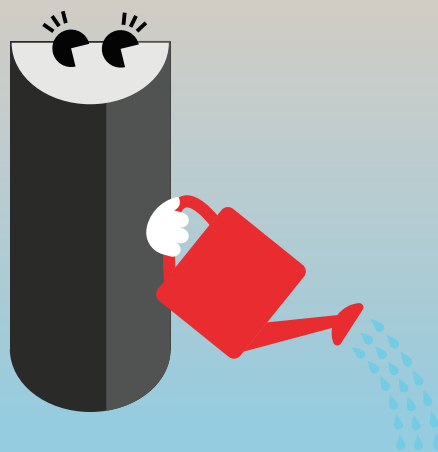


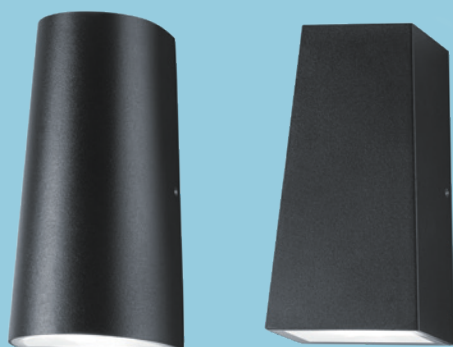
Holly

Wall-mounted LED Outdoor Luminaire



Elegant in appearance, Holly is the perfect match for any wall

- Elegant and timeless design
- 2 different designs (round, square)
- Versions with up/downlight or only downlight available
- Zero uplight versions available to reduce light pollution
- Special designed back plate provides mounting flexibility
- Fast and easy installation thanks to a well positioned 3 pole terminal block



Sealed to IP65
for protected
exterior
applications



50 000 hours
lifetime



IK04 rated
impact
resistance

Ideal for...



Building facades



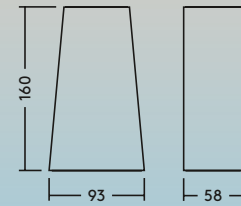
Residential

Special designed
back plate provides
more flexibility in
mounting





Round and square version



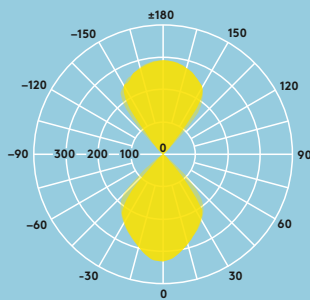
Light distribution

63lm/W



Holly UP/DOWN

cd/klm ULOR: 47 %
DLOR: 53 %
LOR: 100 %

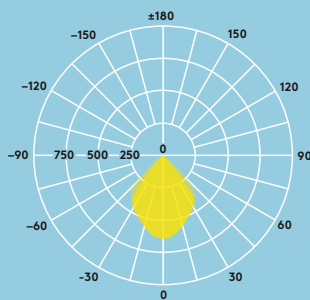


60lm/W



Holly DOWN

cd/klm ULOR: 0 %
DLOR: 100 %
LOR: 100 %



Light source information

- 250 - 500lm
- 3000K
- Lifetime: 50000 hours rated life (@ L80, Ta 25°C)
- CRI 80

Specification

- Class I electrical
- IP65
- IK04
- Ambient operating temperature: -20 to +40°C

Ordering guide

Description	SAP Code
HOLLY CONE ROUND DOWN IP65 300 830	96633683
HOLLY CONE ROUND UP/DOWN IP65 500 830	96633684
HOLLY CONE SQUARE DOWN IP65 300 830	96633685
HOLLY CONE SQUARE UP/DOWN IP65 500 830	96633686

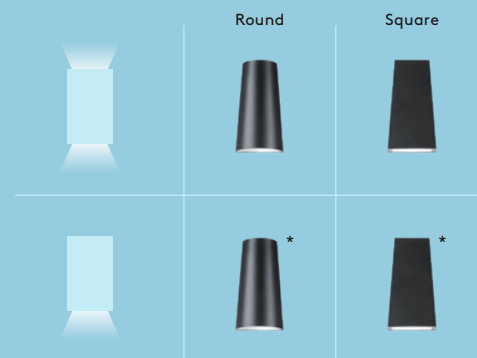
Installation/Mounting

- Fast and easy installation thanks to a well positioned 3 pole terminal block
- Special designed back plate provides more flexibility in mounting

Material/Finish

- Body: Aluminium die-cast RAL7016
- Front cover: clear glass

Light output



*No light pollution, zero uplight