

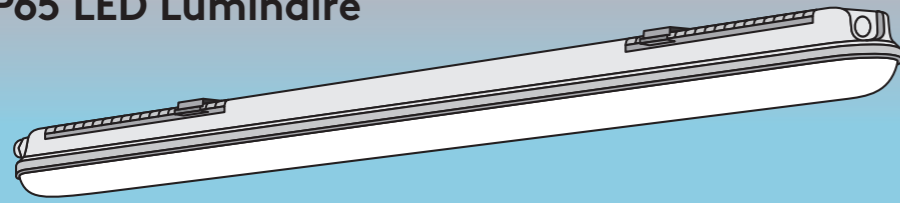
# Julie

FLEX

## IP65 LED Luminaire



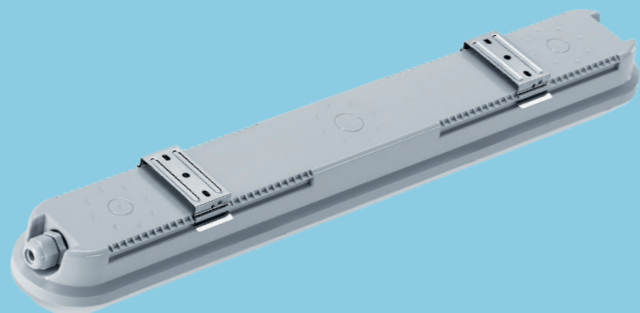
Ideal for: Multi story car parks, workshops, underpasses and storage facilities



Clipless design for a more robust performance and easy installation.

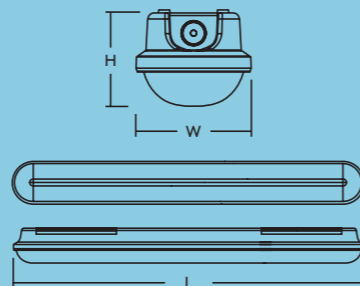


- **FLEX Feature (Lumen switch):** The flexibility to decide on your lumen package on site
- Click-fit clipless diffuser for easy installation
- Energy efficient up to 127 lm/W. Save up to 60% energy compared to a T8 fluorescent
- Perfect for retrofit projects – flexible bracket sliders mean no re-drilling is required in 1:1 replacements
- Quick access with flat head screwdriver for easy maintenance
- Available in standard, quick connect, through-wire and presence sensor with corridor functionality versions
- BESA compatible
- JUST – adapt on-site to an emergency version using the Just Emergency Linear PLUG&PLAY kit (self test with manual option)



	Slider	L	W	H
JULIE 600 LED IP65	170-500	635	94	76
JULIE 1200 LED IP65	570-1100	1235	94	76
JULIE 1500 LED IP65	670-1400	1535	94	76

Dimension (mm)



### Specification

Electrical class	I
Ambient operating temperature	-20 to +40 °C (E3: 0 to +25 °C)
Driver	ENEC certified

### Material / Finish

Canopy	UV stabilised grey polycarbonate
Diffuser	UV stabilised opal polycarbonate
Bracket	Stainless steel

### Light source information

Colour temperature	4000 K
FLEX (Lumen switch)	600mm: 1000lm(8W), 1500lm(12W), 2200lm(18W) 1200mm: 2200lm(18W), 3200lm(25W), 4200lm(34W) 1500mm: 4200lm(33W), 5200lm(41W), 6300lm(51W) 1500mm: 4200lm(33W), 6300lm(50W), 8600lm(72W)
Efficiency	>127lm/W
Lifetime	50 000 hours (@L80, Ta 25 °C)
MacAdam (Initial)	4

### Controllability (default)

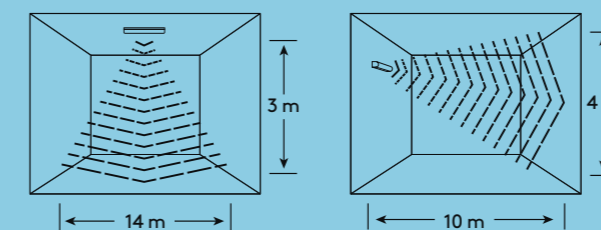
Sensitivity	10%, 50%, 75%, 100%
Time	5s, 30s, 60s, 5 min, 10 min, 20 min, 30 min
Lux	2 lux, 10 lux, 50 lux, disable
Stand-by time	0 sec, 10 sec, 1 min, 10 min, 30 min, 60 min, endless
Dimming level	10%, 20%, 30%, 50%

### Presence sensor with corridor function

Julie's microwave sensor option with corridor function will ensure that you never walk in the dark. The settings are fully adjustable, with the additional benefit of a daylight sensor. Option to connect several luminaires together onto one sensor, for simultaneous functionality.

### Sensor range

at 100% sensitivity



### Ordering guide

Description	SAP Code
JULIE FLEX 1200 4200 840	96700011
JULIE FLEX 1200 4200 840 QC	96700012
JULIE FLEX 1200 4200 840 COR MWS	96700013
JULIE FLEX 1200 4200 840 DALI	96700014
JULIE FLEX 1200 4200 840 TW	96636476
JULIE FLEX 1500 6300 840	96700015
JULIE FLEX 1500 6300 840 QC	96700016
JULIE FLEX 1500 6300 840 COR MWS	96700017
JULIE FLEX 1500 6300 840 DALI	96700018
JULIE FLEX 1500 6300 840 TW	96636477
JULIE FLEX 1500 8600 840	96700019
JULIE FLEX 1500 8600 840 QC	96700020
JULIE FLEX 1500 8600 840 TW	96636478
JULIE FLEX 600 2200 840	96700023
JULIE FLEX 600 2200 840 DALI	96700024
JUST E3 LINEAR P&P KIT SelfTest LiFePo4*	96700027

MWS: microwave presence sensor  
COR: corridor function  
TW: through-wired  
QC: with quick connector

\* not compatible with 600mm or DALI version