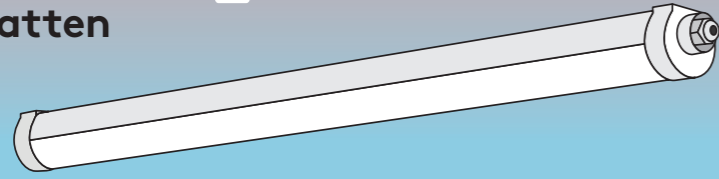


# Lucy

## LED Batten

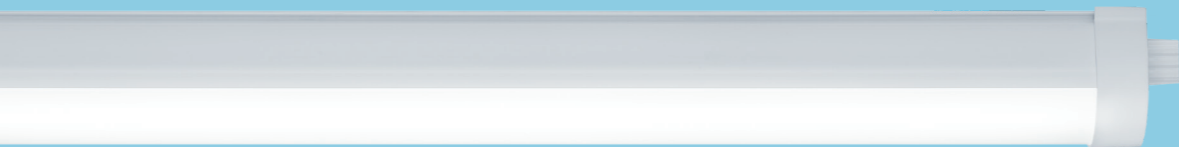


Ideal for: Multi story car parks, workshops, underpasses and storage facilities

Tough, resilient and efficient, Lucy is ideal for workshop areas and functional applications.

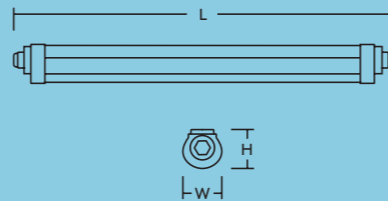


- High quality, low energy lighting in wet and dusty environments with opal diffuser for uniform lighting
- 4 lumen packages from 2000 lm up to 8000 lm
- Through-wired: equipped with two 3-pole push-terminals (N, earth, L) as standard
- Simple twist & lock mechanism allows access to the end caps allowing access to the push terminals
- Mounting brackets can be positioned freely on the luminaire to give flexible installation



	L	W	H
LUCY 600 LED IP66	663	77	68
LUCY 1200 LED IP66	1263	77	68
LUCY 1500 LED IP66	1563	77	68
LUCY 1800 LED IP66	1825	77	68

Dimensions (mm)



### Specification

Electrical class	I
Ambient operating temperature	-20 to +40°C

### Material / Finish

Body	UV stabilised grey polycarbonate
Diffuser	UV stabilised opal polycarbonate

### Installation / Mounting

Mounting	Suitable for surface mounting with surface mount brackets (included) Suitable for Suspension (Optional Kit) Mounting brackets can flexibly slide along the full length of the product
----------	---

### Light source information

Colour temperature	3000 K & 4000 K
Lumen	600mm 2000lm(16.5W-4000K) 1200mm 4000lm(36W-3000K),(33W-4000K) 1500mm 6000lm(54W-3000K),(50W-4000K) 1800mm 8000lm(66W-4000K)
Efficiency	up to 121lm/W
Lifetime	50 000 hours (@L80, Ta 25°C)
MacAdam (Initial)	4

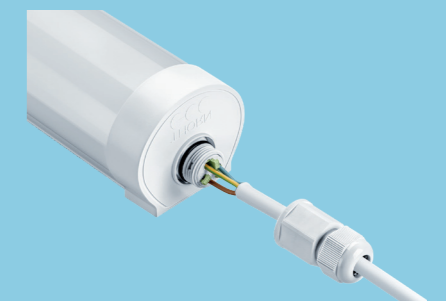
### Ordering guide

Description	SAP Code
LUCY 600 LED IP66 2000 840 TW	96630331
LUCY 1200 LED IP66 4000 830 TW	96635093
LUCY 1200 LED IP66 4000 840 TW	96630332
LUCY 1500 LED IP66 6000 830 TW	96635094
LUCY 1500 LED IP66 6000 840 TW	96630333
LUCY 1800 LED IP66 8000 840 TW	96630334
LUCY LED SUSPENSION KIT	96631301

The twist & lock mechanism in the end caps ...



... allows access to the push terminals ...



... for an easy, quick and tool-free installation

